

Posh Domaine MKII Shower Screens



SPECIFICATIONS

Recommended Use	Domestic, Hotel & Commercial
Material	Glass - 6mm Clear Toughened Safety Glass Frame - Gloss Silver Chrome
Options	Reversible Left or Right Entry Base sold separately
Hardware	90° Hinged Swing Opening Door Double Handle in Gloss Silver Chrome
Additional Inclusions	Glass- Anti Lime Treatment
Size Variations	900 x 900 x 2000mm 1000 x 1000 x 2000mm 1200 x 900 x 2000mm

WARRANTY

Warranty - Domestic Use	7 Years
Spare Parts & Labour	12 Months

To see the complete Posh range go to www.reece.com.au/bathrooms

CLEANING RECOMMENDATIONS

We recommend the use of soapy water or approved cleaners.

This product should not be cleaned with abrasive materials.

Damage caused by any improper treatment is not covered by the product warranty.

Refer to Warranty Conditions.

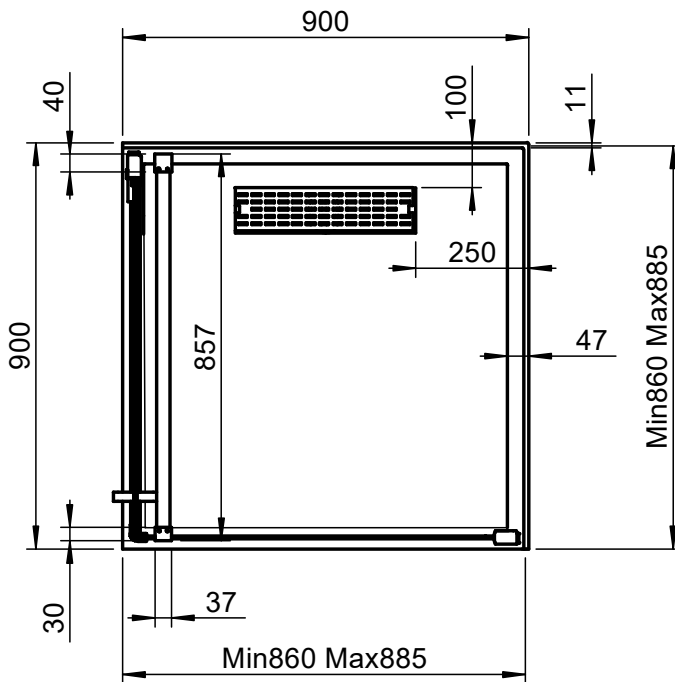
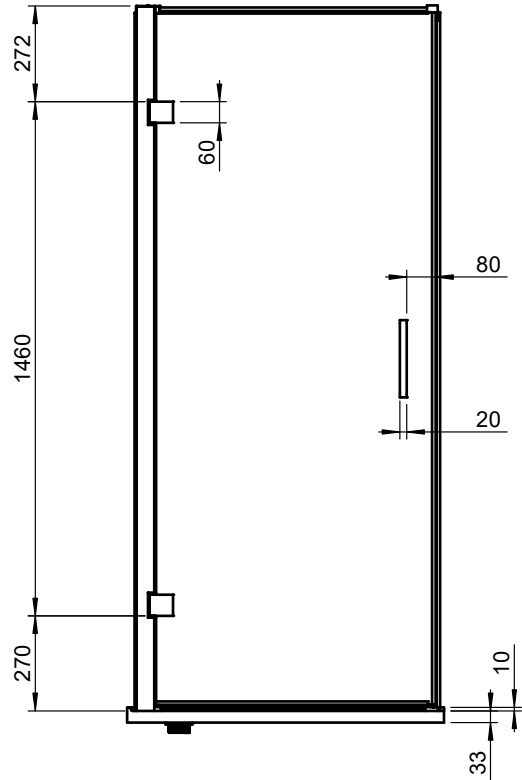
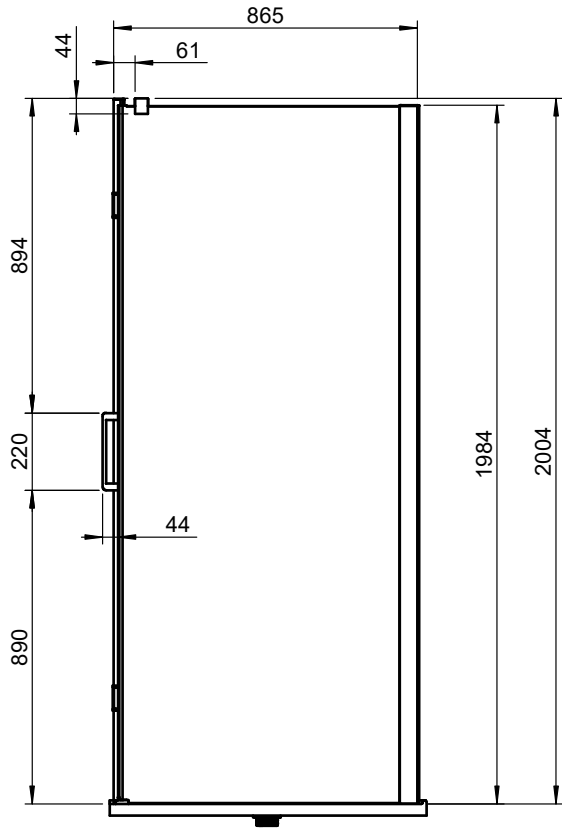
Dimensions are nominal measurements only.

Disclaimer: Products in this specification manual must by regulation be installed by licensed and registered trade people. The manufacturer/distributor reserves the right to vary specifications or delete models from their range without prior notification. Dimensions are nominal measurements only. Dimensions and set-outs listed are correct at time of publication however the manufacturer/distributor takes no responsibility for printing errors.

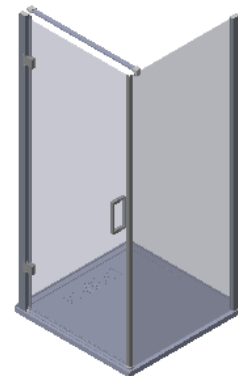
Published 9/08/18



Posh Domaine MKII Shower Screens



POSH DOMAINE MKII
PL900 + LF900

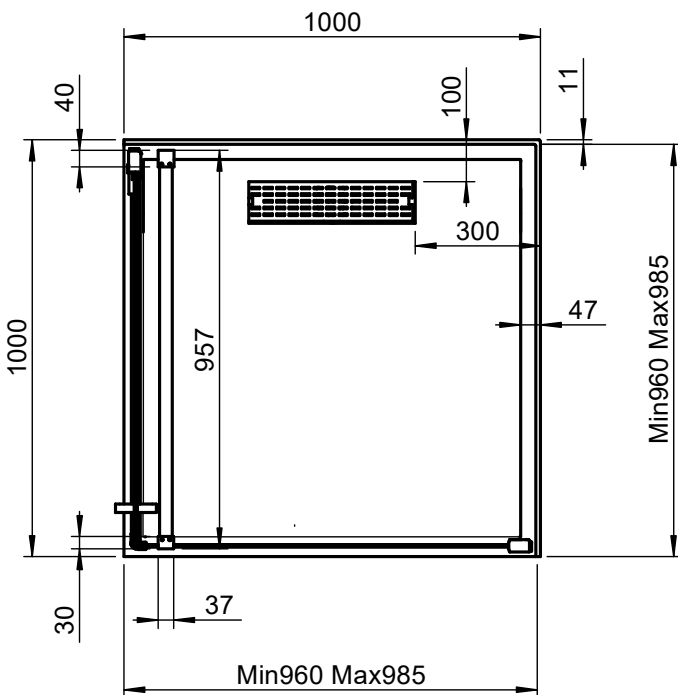
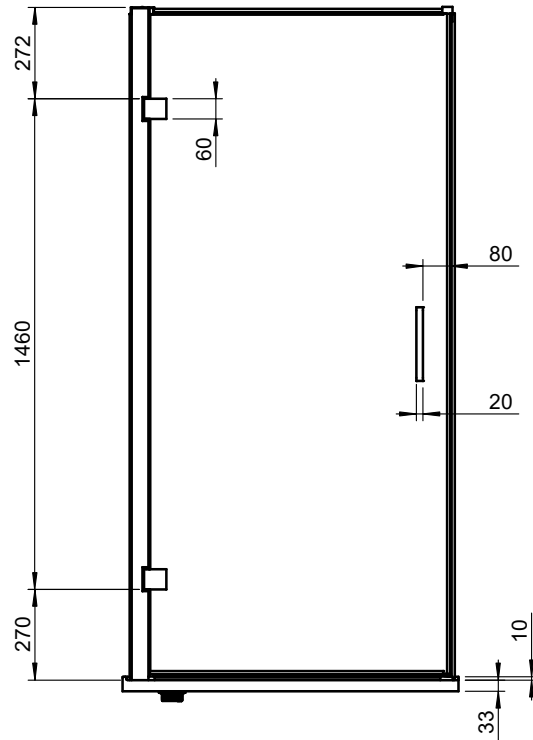
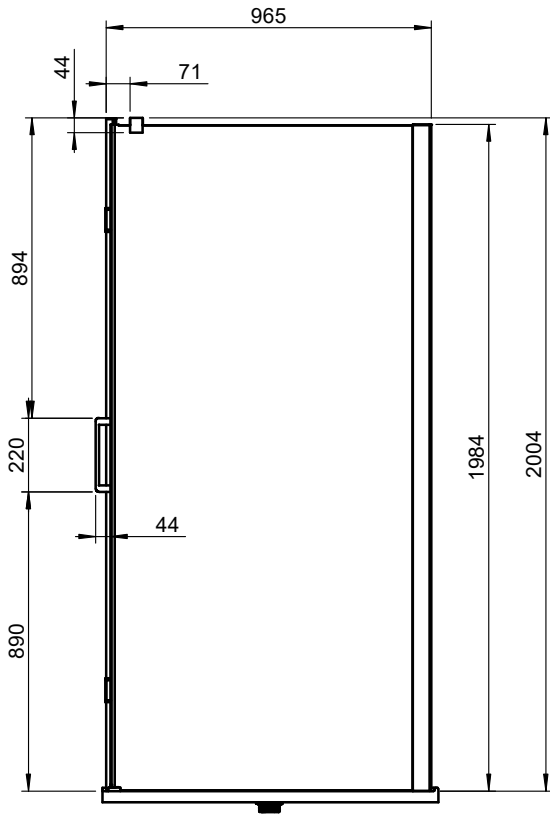


Left or Right Hand Entry

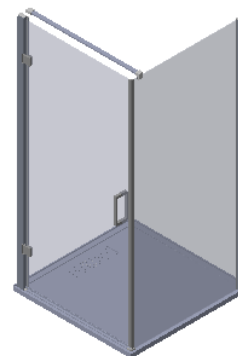
Please note: Diagram shows placement for screens- base not included

Posh

Posh Domaine MKII Shower Screens



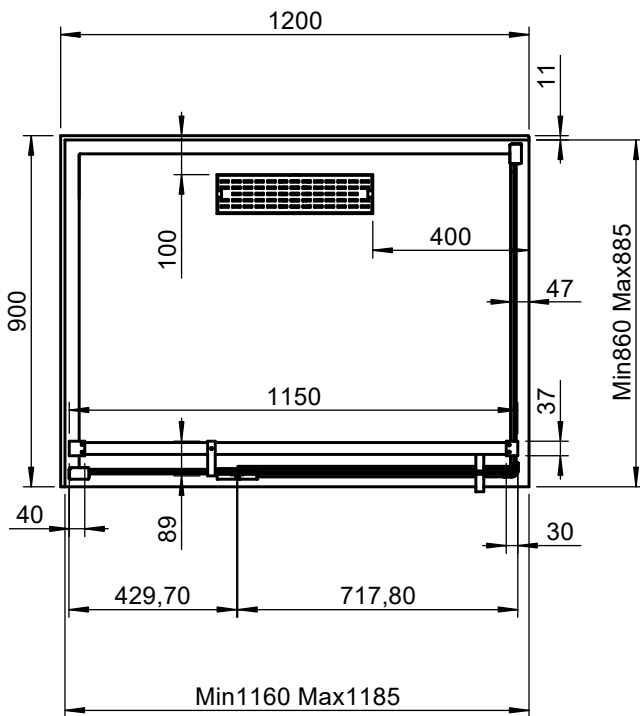
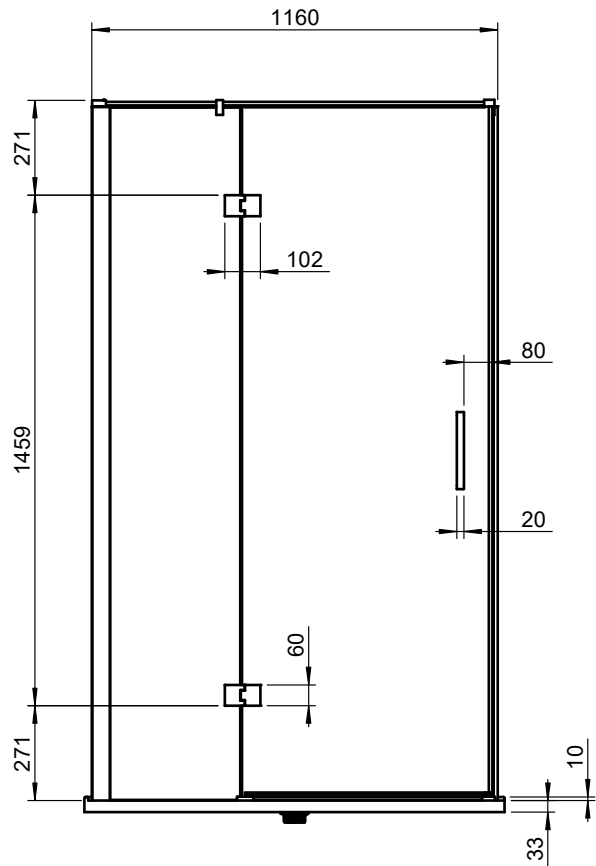
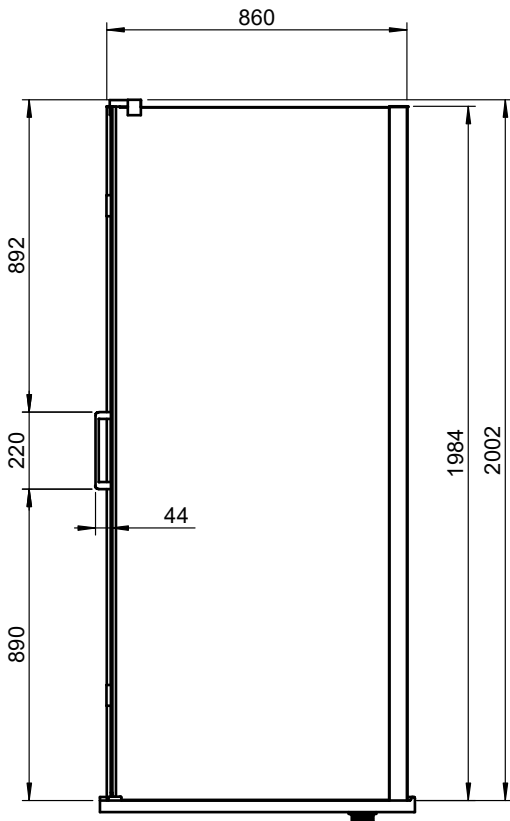
POSH DOMAINE MKII
PL1000 + LF1000



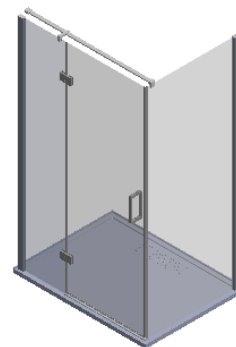
Left or Right Hand Entry

Please note: Diagram shows placement for screens- base not included

Posh Domaine MKII Shower Screens



POSH DOMAINE MKII
PLF1200 + LF900



Left or Right Hand Entry

Please note: Diagram shows placement for screens- base not included